

WEBDL2



The WEBDL2 is a universal data logger consisting of hard- and software. The data logger is based on an ARM9 CPU. The system is running an embedded Linux as operating system.

It acquires data from directly connected measuring instruments like a gamma detector and stores these data.

“WEBDL2” can visualize data directly through a web server in an easy way.

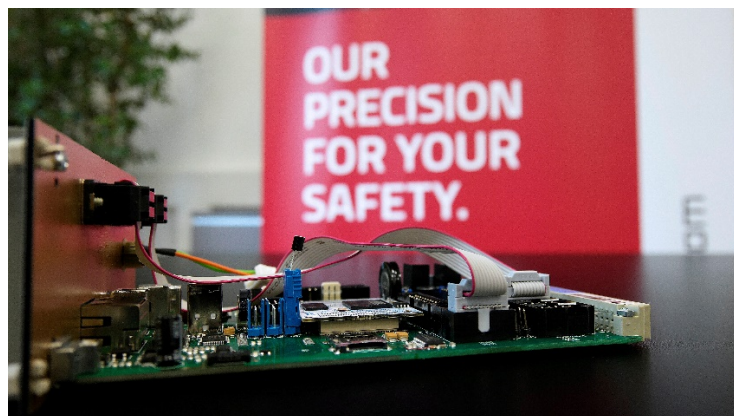
Hardware features:

- ARM CPU
- 64MB RAM
- 8MB Data flash (boot loader)
- SD Card / Mini SD Card
- 1 Ethernet port 10/100Mbit (PoE)
- 1 USB connector external
- 1 USB connector internal
- 3 native serial ports (RS232)
- 1 native RS232 port or alternative RS485/422
- 1-wire interface
- Real time clock (RTC), powered by an ultra-capacitor
- 4-row LCD Display incl. 4-button keypad

Software features:



- Running Linux (2.6.x).
- For specific purpose the WEBDL2 can also provide the collected data through a FTP server.
- Every Browser can act as a client. The web page is optimized for MS Internet Explorer 6 but also tested with Firefox 1.5, Netscape 7.1 and Opera 8.51.
- Support of SSL (https and SSH)
- Configuration of the station through the web page.
- Emergency and maintenance login over a console is provided at a native serial port.
- Login over Telnet and SSH is supported



Options:

- Via USB it is possible to connect several peripherals like printers, displays and modems.
- Flash memory is easily expandable via a flash memory stick connected to the USB port.
- Connections over SAMBA (eg. MS Windows shares).
- Adapting the systems to special customer requirements is possible because Linux is used as operating system which offers many more features, than listed in this product folder!

Wallmount Frames

Our cabinets for gamma monitoring stations are available in 2 versions.

GMS

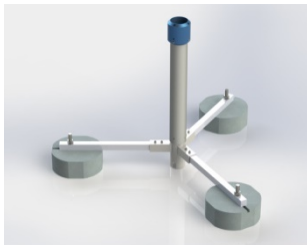
- Dimension: L x H x D in mm: 600 x 450 x 350
- Weight (without accumulator incl. electronic equipment): 15kg (approximately)
- Finish: powder-coated aluminium, RAL 7035
- Wall mounted Cabinet (only indoor use)
- Anti-corrosion design (aluminium housing)
- Easy installation, separate mounting of the removable back cover
- Door hinge right or left possible
- fault-current circuit breaker
- Surge protection system for power grid probe and data communication
- Key lock
- designed for WEBDL-L



GMS-light

- Dimension: W x D x H in mm: 500 x 400 x 220
- Weight (without accumulator incl. electronic equipment): 10kg (approximately)
- Finish: powder-coated aluminium, RAL 7035
- Wall mounted Cabinet (only indoor use)
- Anti-corrosion design (aluminium housing)
- Plug for RS04/X gamma detector
- Drop-out voltage bridge (backup battery)
- 12Ah Battery, deep discharge protection
- Surge protection system for power grid probe and data communication
- Key lock
- designed for WEBDL-S

Mounting Kits



Tripod;



Pole



Wall and mast mounting