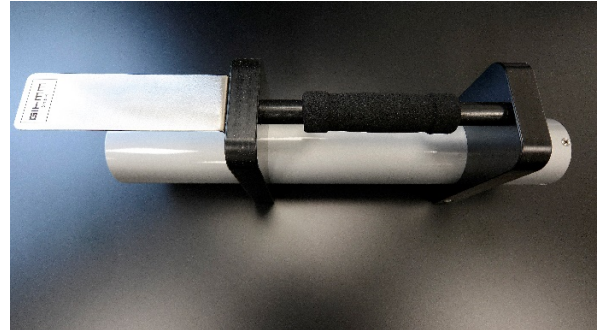


GAMMO

GAMma MObile are additional tools and accessories for our gamma probes RS04 and GSP02 in mobile applications.

On our **Handhold** you can easily mount the probe with 2 screws.
In front of the handle you can clip a small box named **GTx (Gammo-Tools)**



With our **GT1** you can supply your RS04 or GSP02 probes with power and process the data via USB on a PC or send data with Bluetooth to our GAMMO APP

With the integrated 8000mAh LiPo battery you can operate the probes autonomously up to 8 hours and charge your mobile phone.

Together with the GAMMO Handhold every gamma probe (RS04 or GSP02) can be used mobile.

GT2D is our first handheld gamma probe which is equipped with a GM and with a measuring range up to 40mSv/h.

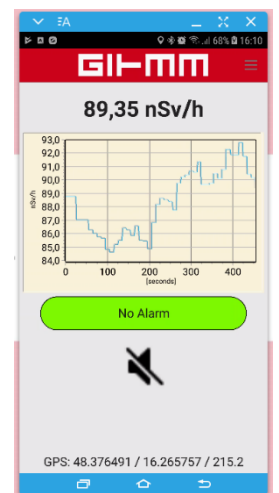
With the integrated 8000mAh LiPo battery you can operate the device autonomously for up to 2 weeks and charge your mobile phone.

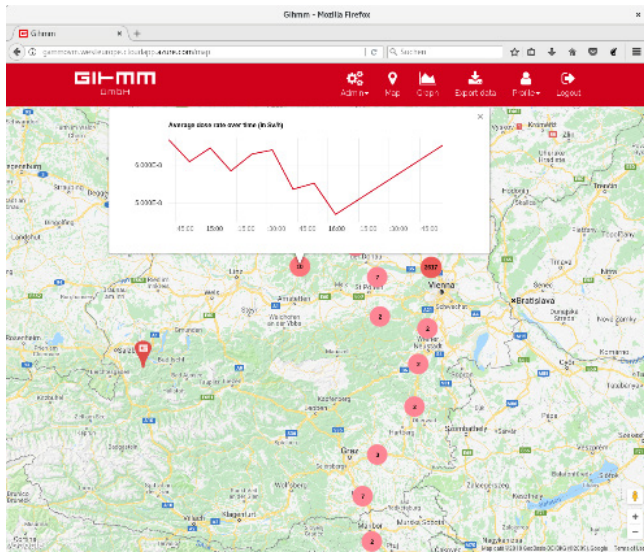
The data can be processed via USB on a PC or sent via Bluetooth to our GAMMO APP.

GT2D also has a display and a keyboard to inform you without our APP.

With our GAMMO APP (actual for Android) you can control the values form the GTx tools

- indicating the dose rate
- Chart view
- GTx administration
- Data storage
- Data export to BITT SCADA
- Data export to GAMMO Portal



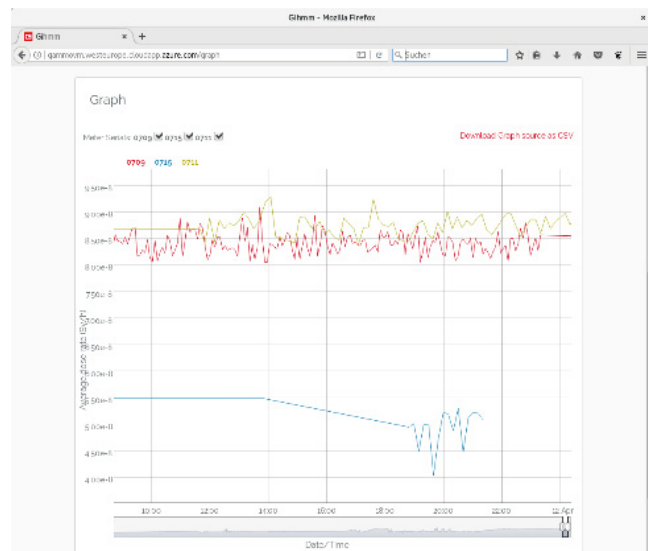


GAMMO Portal is a small WEB based application for gamma monitoring stations (recommended for max. 10 stations)

- Map for actual location incl. indicating the dose rate
- Chart view
- Station administration
- csv export

You can use GAMMO Portal

- on a local WIN10 or Linux
- as cloud service (monthly rate incl. all feature updates)



In the **GAMMO CASE** you can store all those accessories (incl. probe and additional power bank) for an easy transport. The probe can also operate in that case during transport.

